



## Water Solutions

# PipeMic© M In-Pipe Leak Detection

The PipeMic© M from FAST is the original In-Pipe Leak Detection tool for pressurised live water pipes.

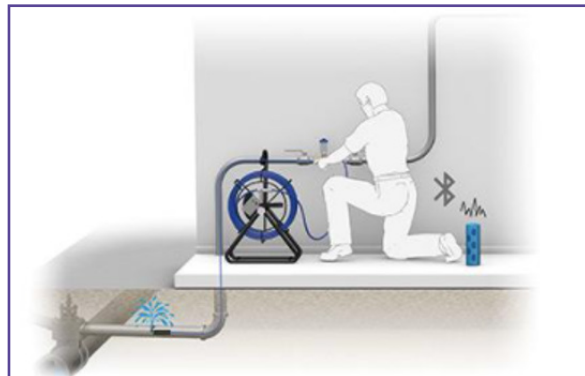
The PipeMic© M is an in-pipe acoustic leak detection system. The innovative tip houses an acoustic sensor that can detect leaks from within the pipe. When a leak has been located the line of the pipe can be detected by line tracing the PipeMic©, and then accurately pinpointing the tip by tip tracing the acoustic sensor. The PipeMic© Flex is a fast accurate methodology of tracing service pipes for 25mm diameter.



The PipeMic© uses a robust 4.5mm diameter rod which allows it to negotiate slow (long) radius bends in 25mm pipe. The rod has a rigidity that allows it to be used in smaller diameter mains up to 100mm in diameter.

### Features

- High sensitivity
- Can be used down to pressures as low as 1bar
- Uses standard CAT and Genny equipment for tracing
- Bluetooth the sound to either speakers or headphones.
- 10bar aqualock seal
- Chlorination tank and wiper seal
- Works from standard 9v battery
- Multiple access opportunities



The PipeMic© uses a simple Bluetooth connection to either an external speaker or a set of headphones. The unit also contains a light bar to visually show the acoustic noise register all operated by a 9v battery.

The PipeMic© M can be supplied in standard format for pressurised water systems and in a WRAS material compliant version for the UK market.

**CONTACT OUR TEAM TODAY TO DISCUSS YOUR REQUIREMENTS**  
**01249 816181 > [info@hmglocation.co.uk](mailto:info@hmglocation.co.uk) > [www.hmglocation.co.uk](http://www.hmglocation.co.uk)**

©2021 HMG Water Solutions Ltd. All rights reserved to make changes to design and specification without prior notice or consent. E&OE

[INFO@HMGLOCATION.CO.UK](mailto:INFO@HMGLOCATION.CO.UK)

01249 816181

LOCATE : SURVEY : DETECT

[WWW.HMGLOCATION.CO.UK](http://WWW.HMGLOCATION.CO.UK)





## Water Solutions

Product Specification	
Product	PipeMic© M & PipeMic© MW
Weight	7kg (for 50 to 80m) or 8kg for 100m
Dimensions	570 x 400 x 160mm (for 50 to 80m) or 588 x 485 x 288mm (for 100m)
Material	Fibreglass rod, brass, aluminium, and EPDM rubber
Compliance with WRAS	The PipeMic M is not manufactured from WRAS compliant material or material that meets with BS6920 The PipeMic MW has been made where all wetted parts when inside a pipe are compliant with BS6920 or use materials that have an existing WRAS approval
Length	50m standard. Also available in 80meter or 100m lengths
Operating Pressure	From 1Bar up to 10Bar
Location Depth	Up to 3.5m*1
Operating Temp Range	-0°C to +50°C
IP Rating	IP66 / IP68
Connection	¾" BSP Screwthread (WRAS Compliant) or Geka Fittings (Non-WRAS)
Batteries	1 x 9V Alkaline Battery PP3 (anticipated usage up to 12 hours operational used)

Access Systems	
End on to Service Pipes	Through a valve – Connect to the vale using an adaptor
End on to Service Pipes	Use a Philmac fitting end or equivalent following a squeeze off operations
Via boundary box slow bend	Through a 90° slow (long) bend (hockey stick type) boundary box using a standpipe
Via boundary box 90° short (sharp) bend	Through a 90° short (sharp) radius bend boundary box using a standpipe and an insertion tube
Through PE Top Tees into small diameter mains	Insert through 32 or 63mm PE top tees using our Stargland Kit H2O
Through Saddles into small diameter mains	Insert through a Torres Golf Saddle using a Pressure Balanced Tube and a saddle adaptor
Through Hydrants into small diameter mains	Insert through a through bore hydrants using a Pressure Balanced Tube

PipeMic System				
Length	Part No.	Description	Part No.	Description WRAS material
50m	300101	PipeMic©M 4.5mm semi-rigid rod	300102	PipeMic©M 4.5mm semi-rigid rod
80m	300103	PipeMic©M 4.5mm semi-rigid rod	300104	PipeMic©M 4.5mm semi-rigid rod
100m	300105	PipeMic©M 4.5mm semi-rigid rod	300106	PipeMic©M 4.5mm semi-rigid rod

Each PipeMic© system comes with as standard,

- Inbuilt, Acoustic Sensor, Sonde and a mechanical length counter
- External Bluetooth Speaker, External Chlorination Tank, Banana Connection Leads (2 x 50cm 4mm connections)

\*1 dependent on location and tracing equipment used and ground conditions PipeMic© is a trademark of FAST GMBH

**CONTACT OUR TEAM TODAY TO DISCUSS YOUR REQUIREMENTS**  
**01249 816181 > info@hmglocation.co.uk > www.hmglocation.co.uk**

©2021 HMG Water Solutions Ltd. All rights reserved to make changes to design and specification without prior notice or consent. E&OE

